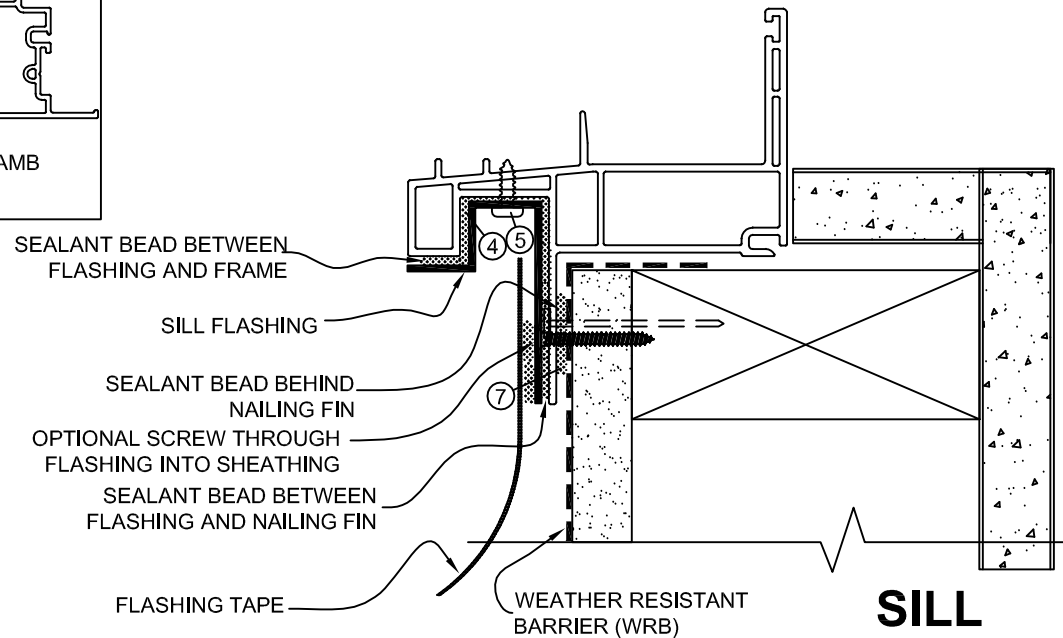
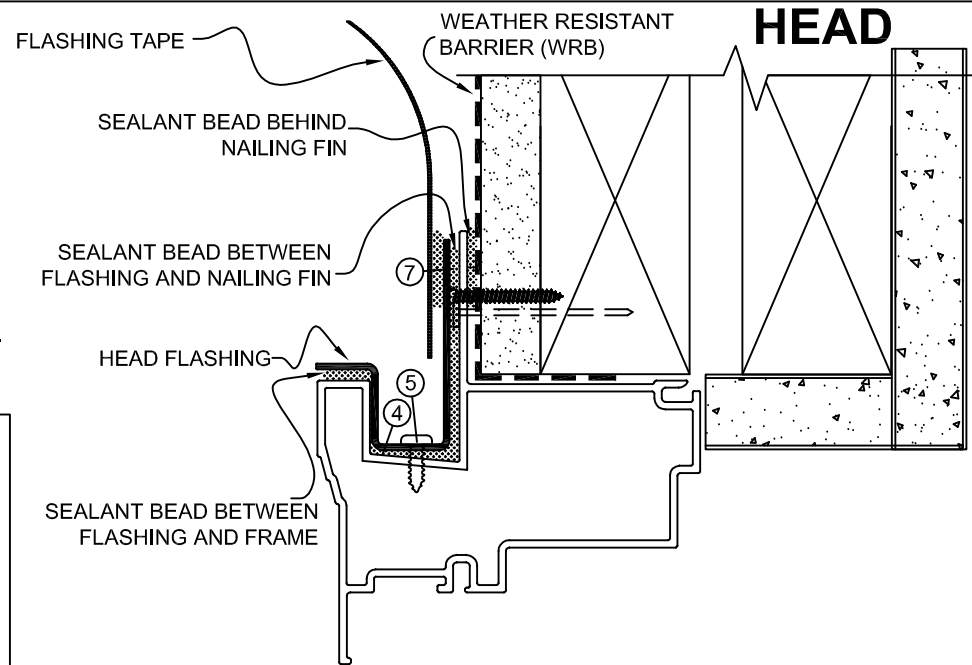
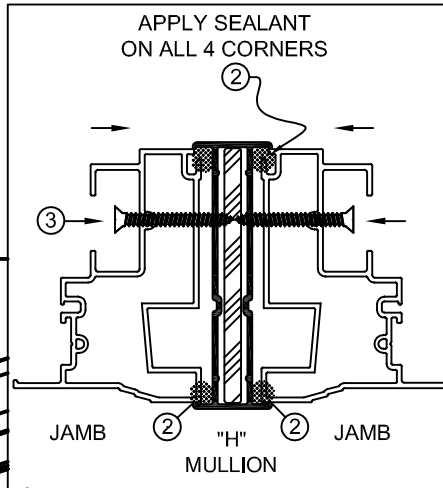
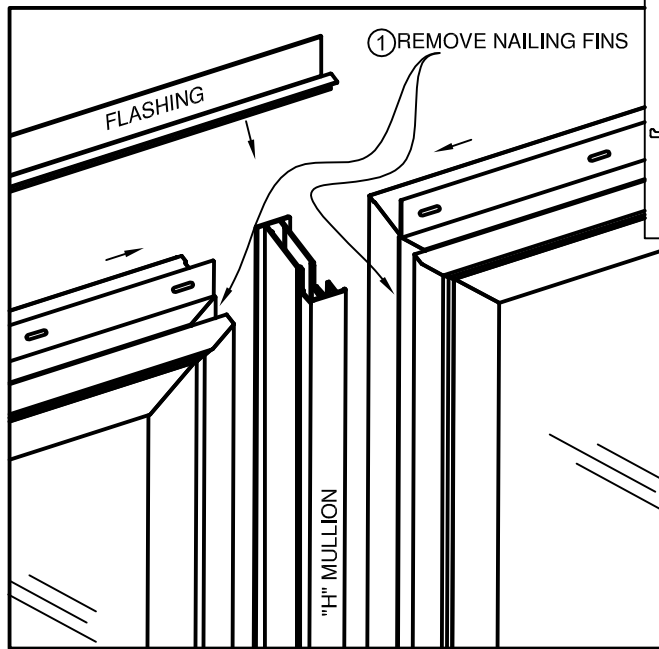


FIELD MULLING INSTRUCTIONS

1. REMOVE NAILING FINNS FROM THE TWO JAMBS TO BE CONNECTED.
2. APPLY SEALANT BETWEEN "H" MULLION AND THE TWO JAMBS FULL LENGTH. ASSEMBLE.
3. USE FASTENERS (#8X1 1/2" PHILLIPS FLAT TEK) TO SECURE THE JAMBS TO THE "H" MULLION. APPLY SCREW AT 6" FROM EACH END AND EVERY 12" IN THE MIDDLE THROUGH BOTH JAMBS.
4. APPLY SEALANT TO HEAD FLASHING. INSERT FLASHING INTO THE HEADER "J" CHANNEL AT THE MULLION ASSEMBLY.
5. FASTEN FLASHING TO THE BOTTOM OF THE "J" CHANNEL WITH #6X 3/8 " PHILLIPS PAN SCREW.
6. REPEAT STEPS 4-5 FOR THE SILL. **SCREWS MUST NOT BE PLACE MORE THAN 1 3/4" FROM CENTER OF THE SILL.**
7. APPLY SILICONE SEALANT AROUND THE PERIMETER ON THE BACK SIDE OF THE NAIL FIN.
8. INSTALL MULLED WINDOW SQUARE, PLUMB AND LEVEL INTO ROUGH OPENING (FASTEN THROUGH EVERY OTHER SLOT).



Copyright © 2008
ROYAL GROUP, INC.
 All Rights Reserved



ROYAL GROUP
 111 Royal Group Crescent
 Woodbridge, Ontario,
 Canada L4L 1X9

UNLESS OTHERWISE SPECIFIED
 DIMENSIONS ARE IN INCHES

MATERIAL / COLOUR:
 AS SPECIFIED

NOTICE: THE INFORMATION CONTAINED HEREON IS THE PROPERTY OF ROYAL GROUP, INC. IT'S CONTENTS ARE CONFIDENTIAL AND MUST NOT BE COPIED OR SUBMITTED TO OUSIDE PARTIES FOR USE OR EXAMINATION WITHOUT THE WRITTEN PERMISSION OF ROYAL.

DO NOT SCALE DRAWING

SIZE: 'A'	DATE: AUG-06-2008
SCALE: N.T.S	ACAD NO.: D210-005
SHEET: 1 OF 1	PROGRAM NO.:

COMFORT VIEW PRODUCTS

1900 SERIES – SINGLE HUNG MULLING INSTRUCTIONS

WALL THICKNESS:
AS MARKED

DRAWN:
NAS

CHECKED:
D.R.C.